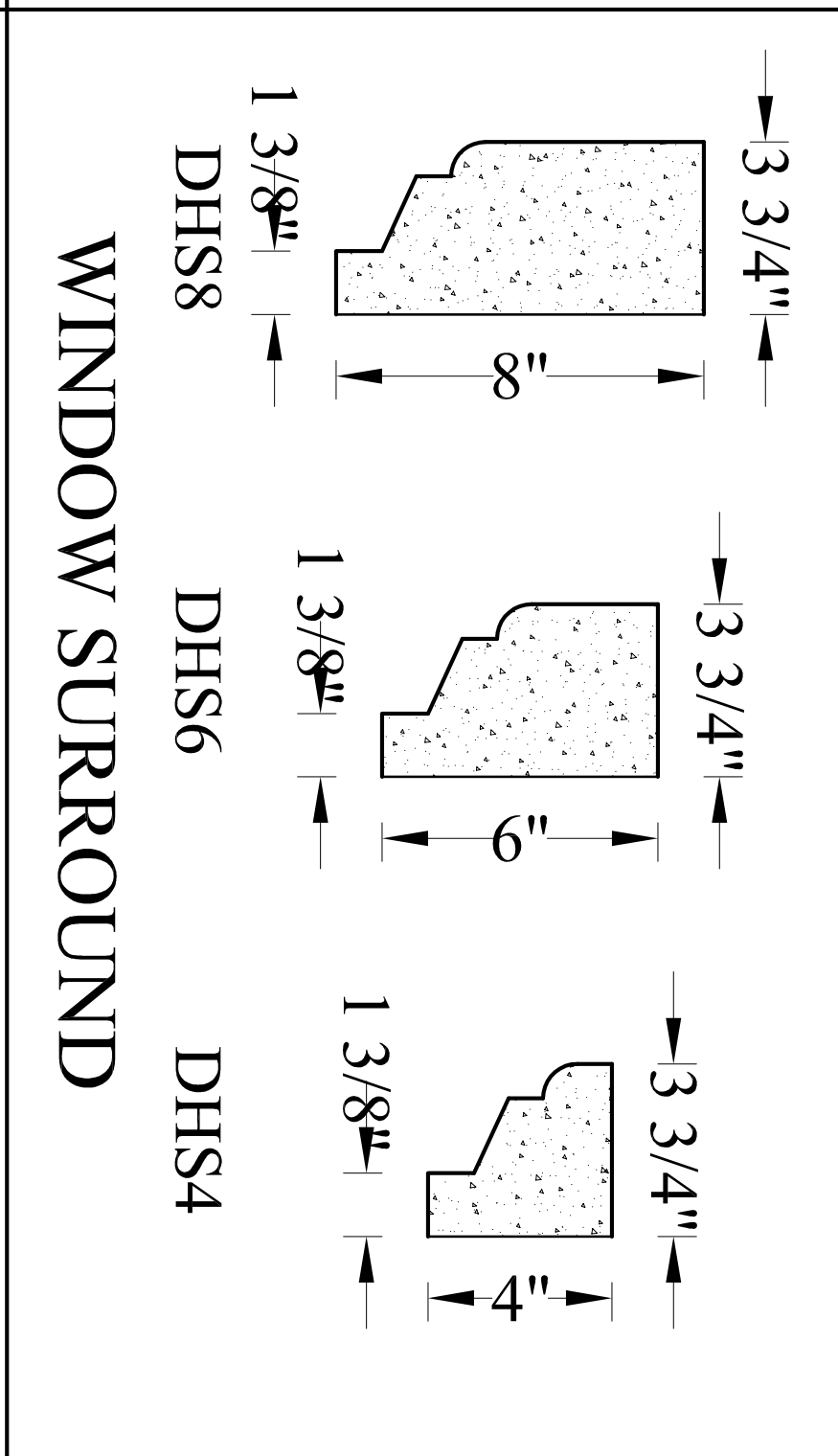
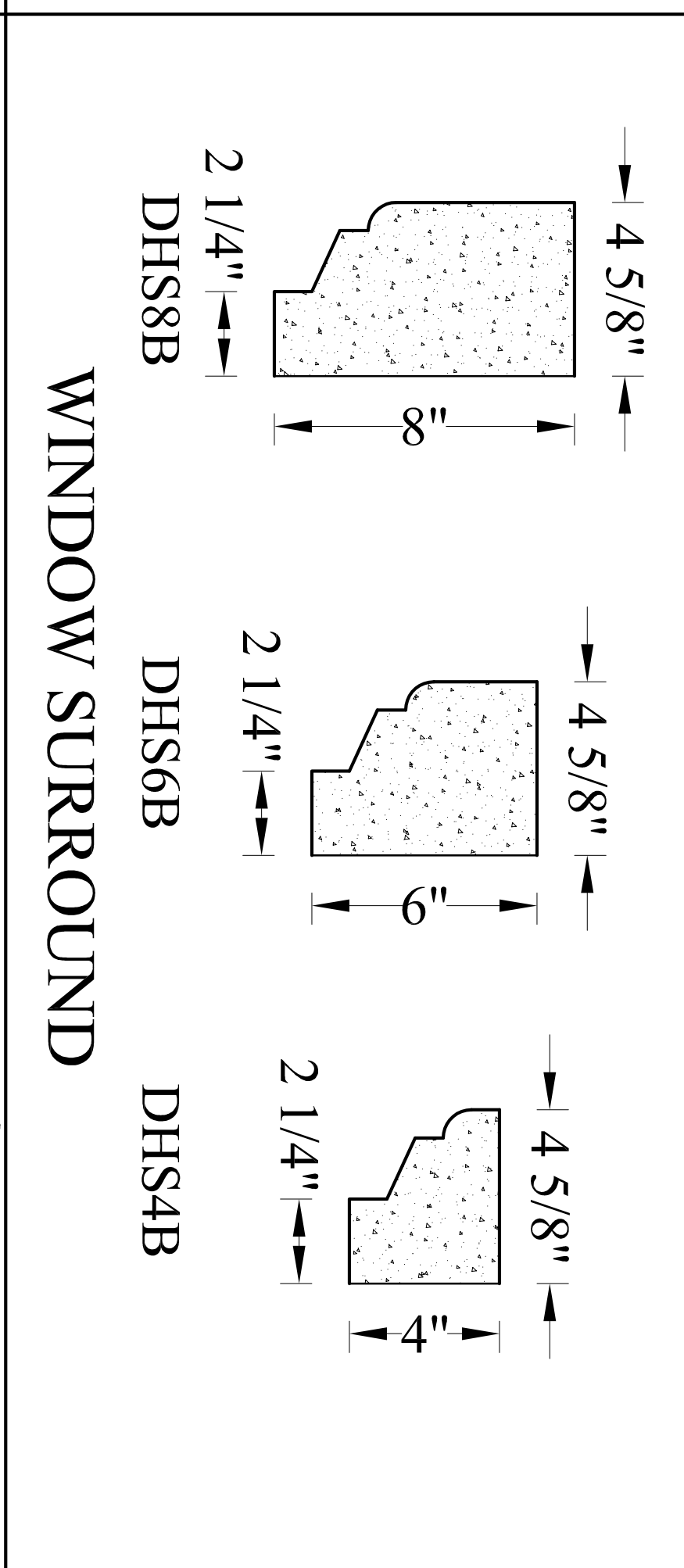
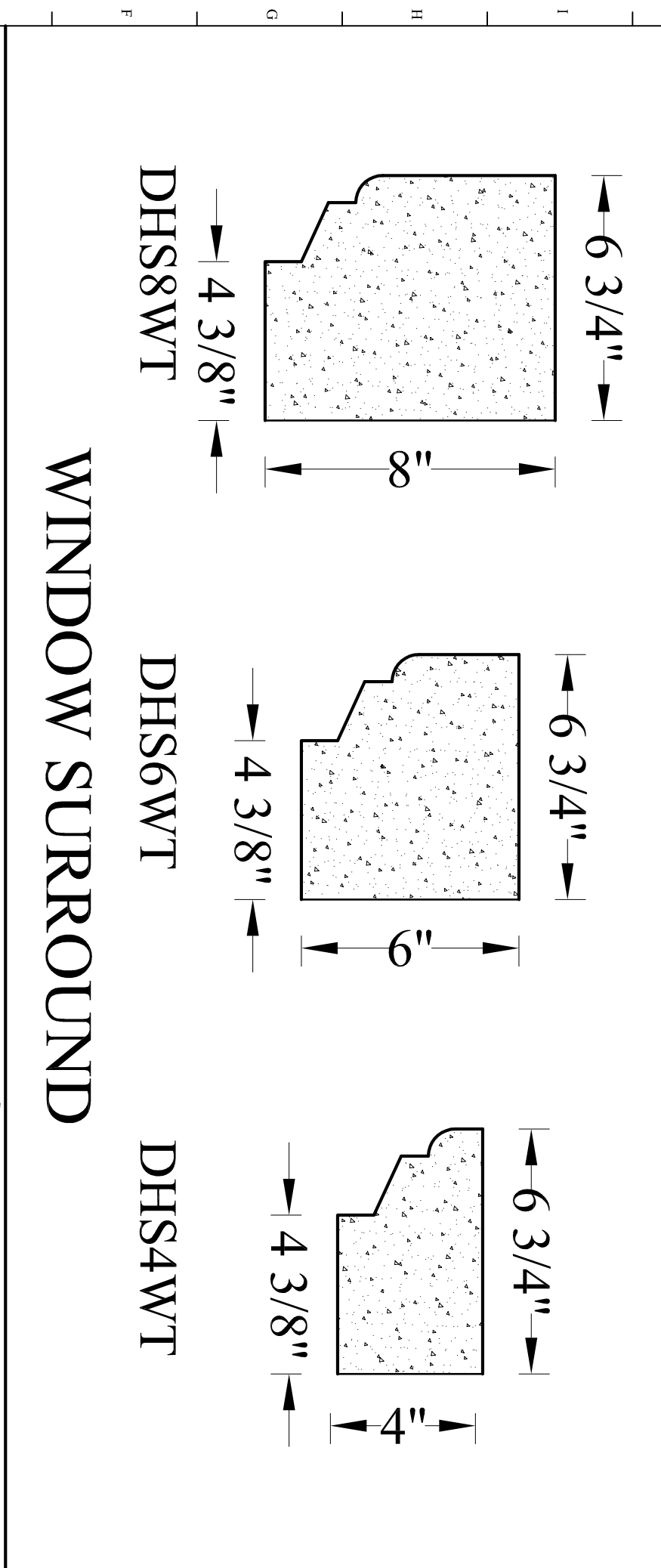
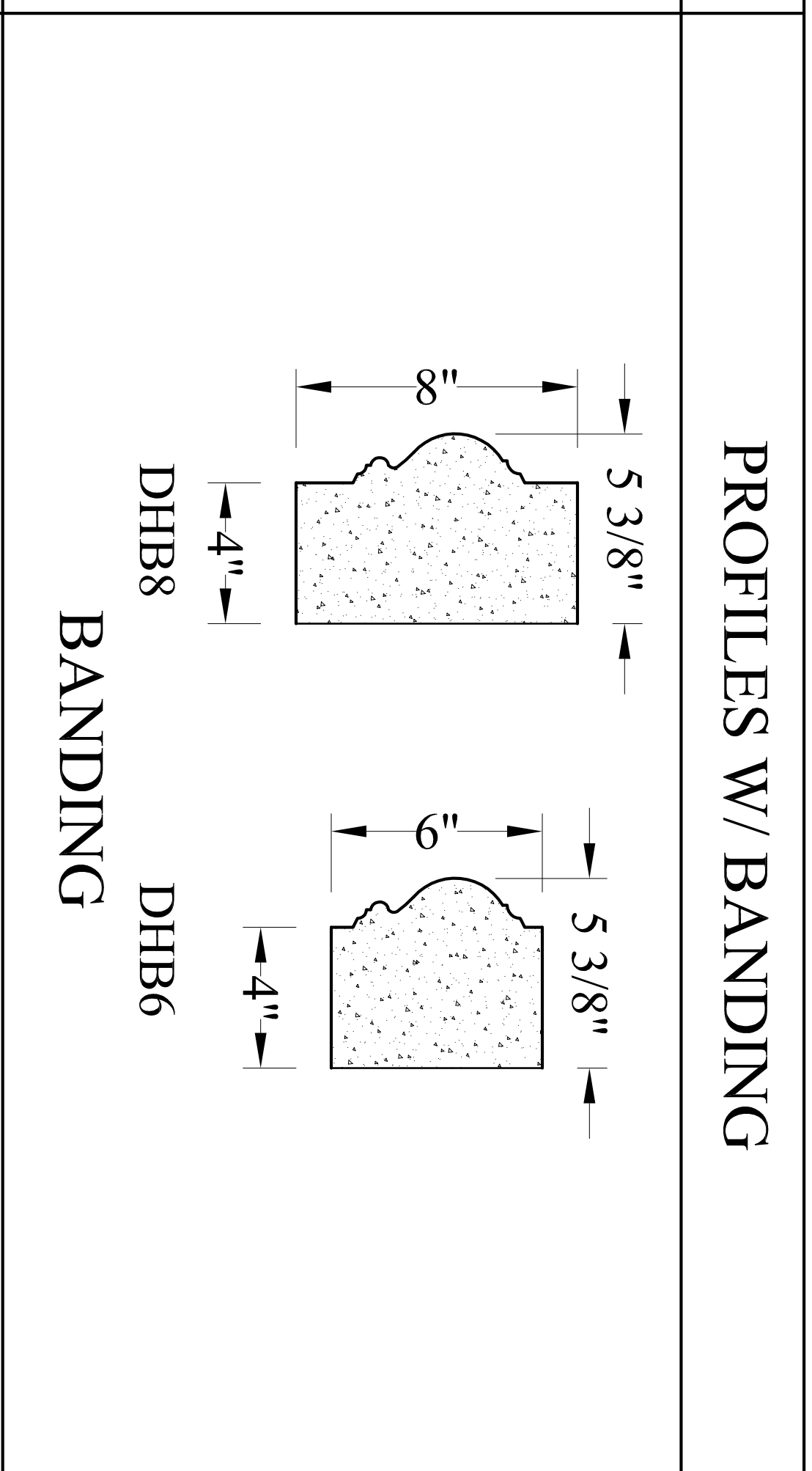
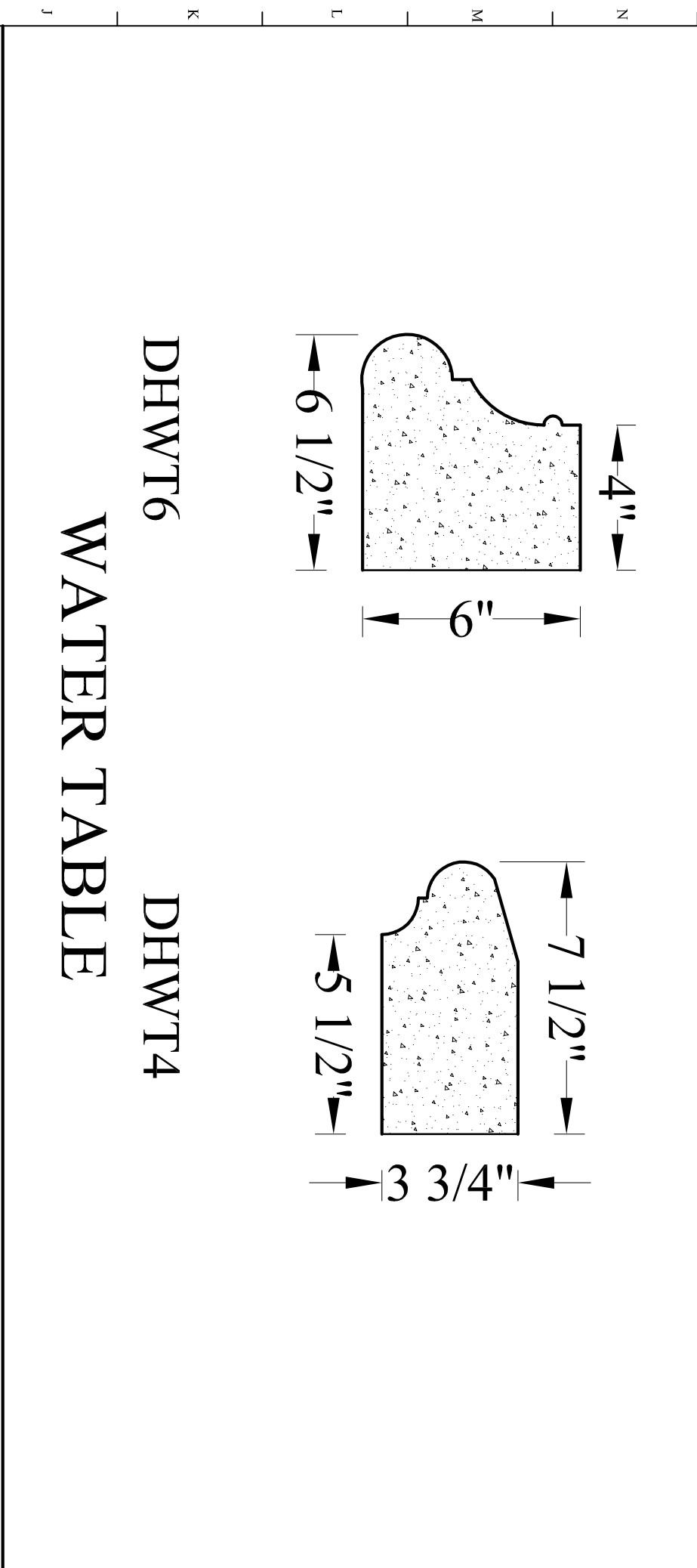
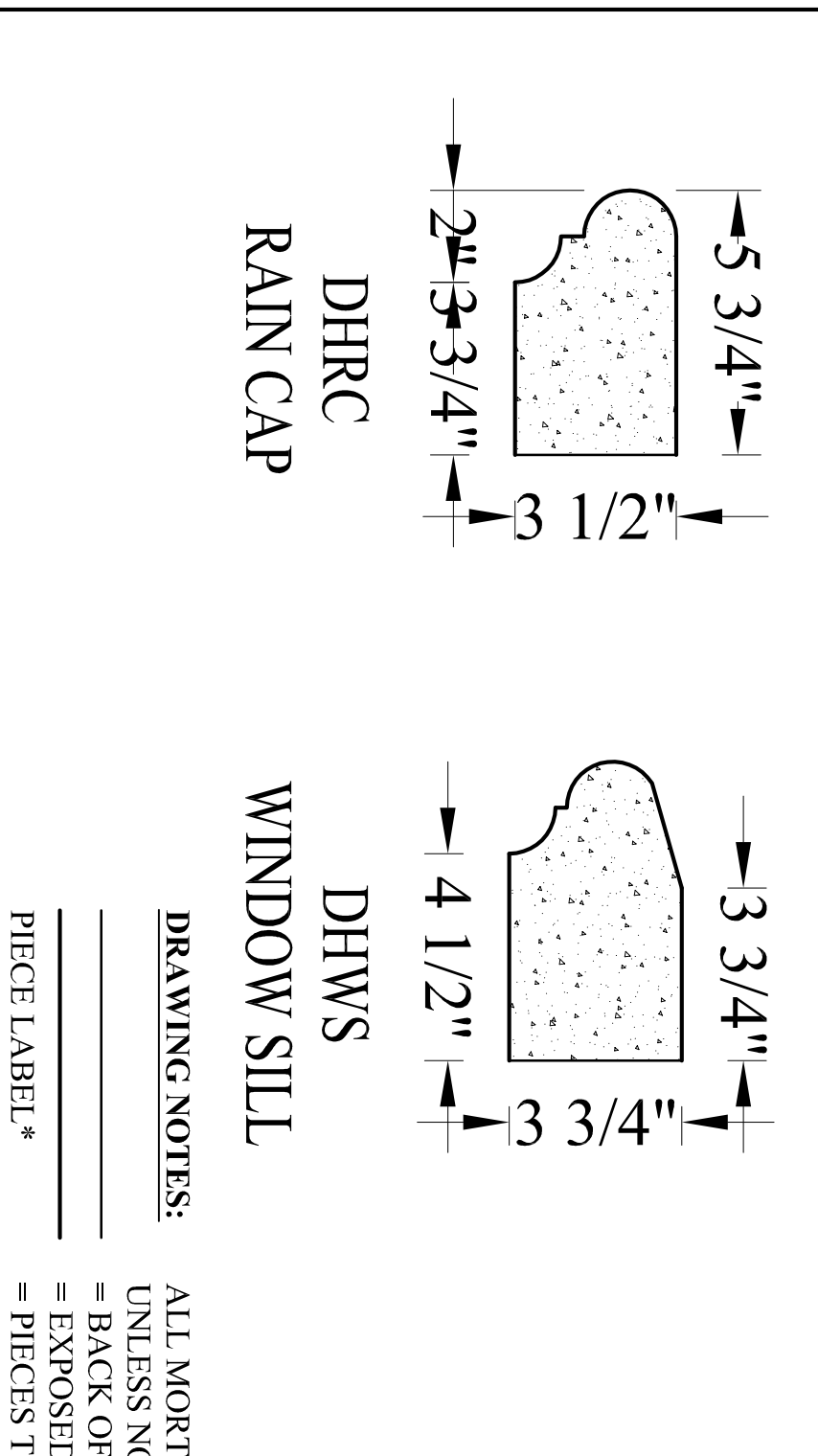
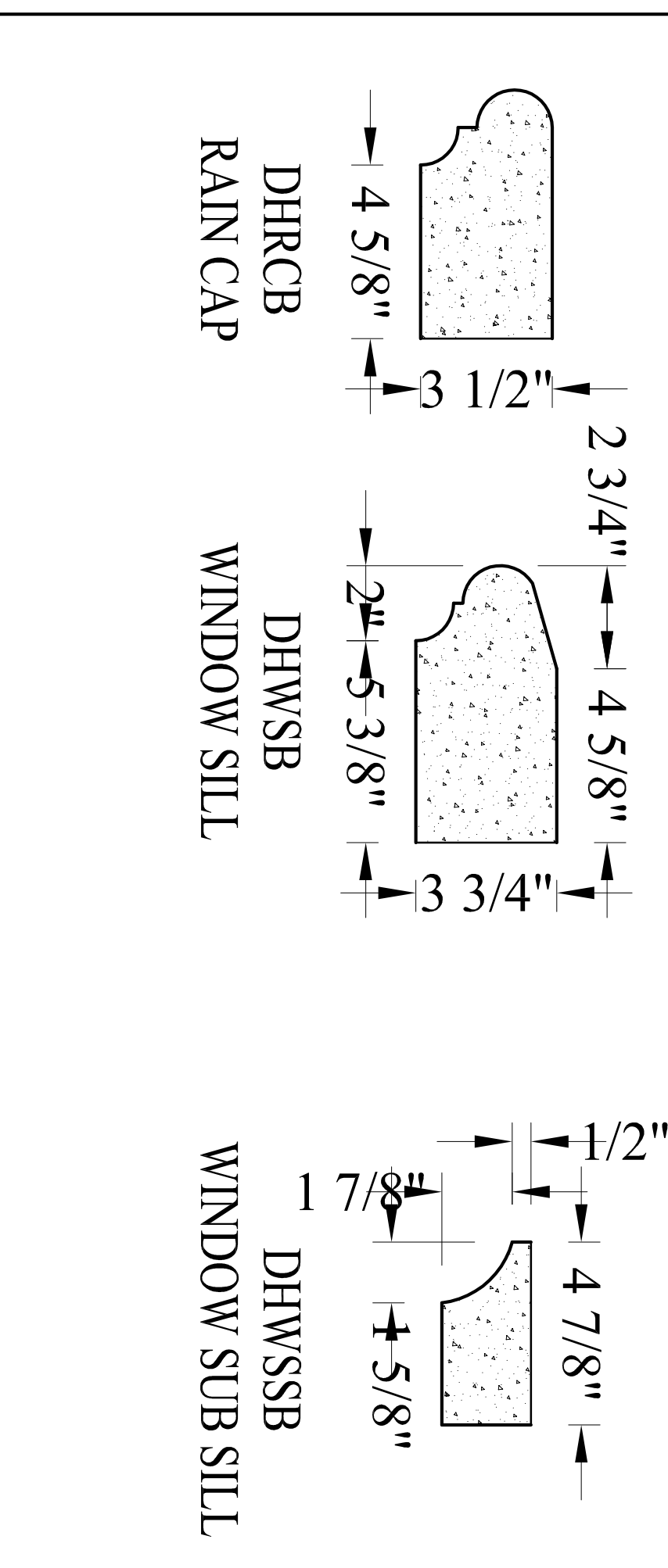
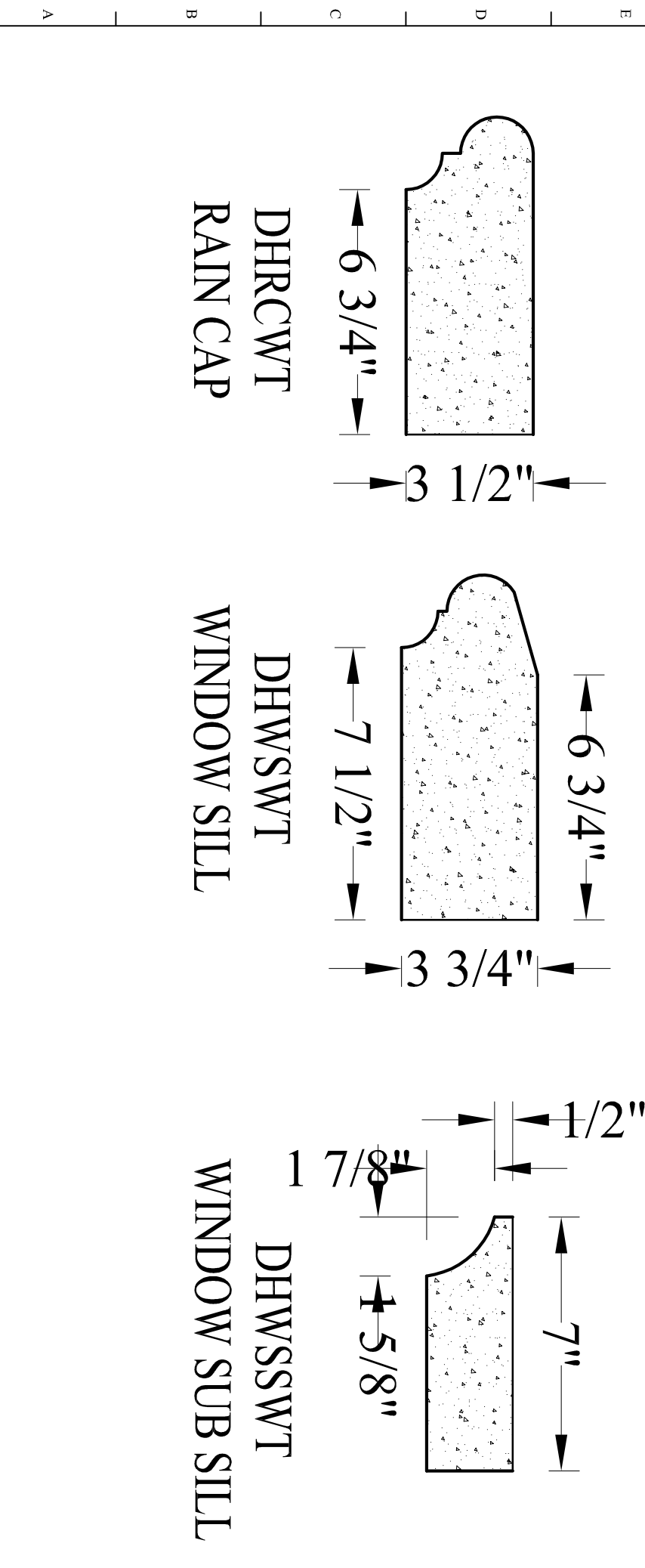


# MLD PROFILES

## PROFILES W/ WATER TABLE



# DH PROFILES



# DH PROFILES

**SD-01**

SHEET: 1 OF: 1

SCALE: NTS

**AHI Supply Company, LP**

2800 NORTH GORDON ALVIN, TEXAS 77511  
 P.O. BOX 884 FRIENDSWOOD, TEXAS 77546  
 PH: 281-331-0088  
 FAX: 281-331-9813

PROJECT: AHI - Standard profiles

REVISIONS:

DATE: OCTOBER 2015

JOB NO:

PICK TICKET #:

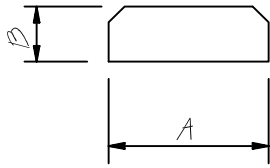
DESIGN BY:

DRAWN BY:

CONTRACTOR:

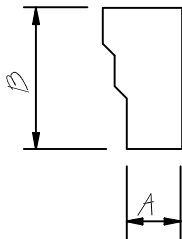
RELEASE DATE ON ARCHITECTURALS:

Note - Virtually every molding profile we offer is available in lengths up to 36 inches.  
 Also, every profile has been replicated in many different radii for arched applications such as window surrounds and entries.



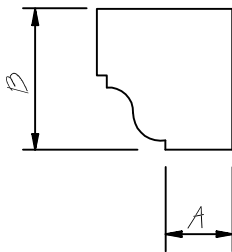
### MLD-10 Molding

ITEM NUMBER	"A"	"B"	"C"	"D"
CSML1064	6"	4"	-	36"
CSML1084	8"	4"	-	36"



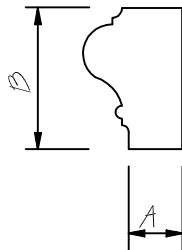
### MLD-20 Molding

ITEM NUMBER	"A"	"B"	"C"	"D"
CSML2084	4"	8"	-	36"



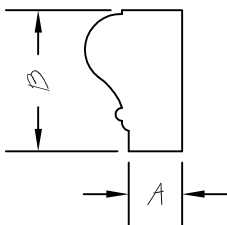
### MLD-30 Molding

ITEM NUMBER	"A"	"B"	"C"	"D"
CSML30735	3-5/8"	6-3/4"	-	36"



### MLD-40 Molding

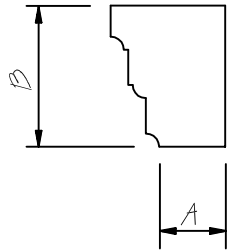
ITEM NUMBER	"A"	"B"	"C"	"D"
CSML4063	3"	6"	-	36"



### MLD-45 Molding

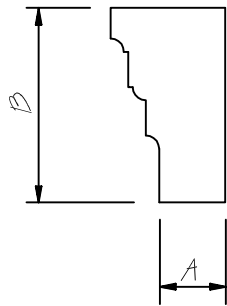
ITEM NUMBER	"A"	"B"	"C"	"D"
CSML4584	4"	8"	-	36"

Note - Virtually every molding profile we offer is available in lengths up to 36 inches.  
 Also, every profile has been replicated in many different radii for arched applications such as window surrounds and entries.



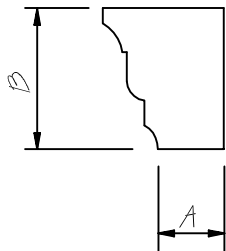
### MLD-50 Molding

ITEM NUMBER	"A"	"B"	"C"	"D"
CSML508475	4-1/2"	8"	-	Varies



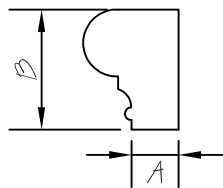
### MLD-55 Molding

ITEM NUMBER	"A"	"B"	"C"	"D"
CSML5512475	4-3/4"	12"	-	Varies



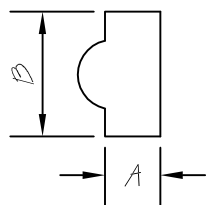
### MLD-65 Molding

ITEM NUMBER	"A"	"B"	"C"	"D"
CSML6564	4"	6"	-	Varies



### MLD-70 Molding

ITEM NUMBER	"A"	"B"	"C"	"D"
CSML7064	4"	6"	-	Varies



### MLD-75 Molding

ITEM NUMBER	"A"	"B"	"C"	"D"
CSML7544	4"	4"	-	Varies